

Groundbreaker®

THE GREEN AND COST EFFECTIVE SOLUTION TO WATER SUPPLY MANAGEMENT

For cost effective Water management solutions for new build, refurb, and water consumption management Groundbreaker ticks all the boxes.

Why use Groundbreaker?

- ✓ Certified as resisting temperatures as low as -15C for 3 days (water industry standard 4-37-01).
- ✓ Security designed in - toggle latches.
- ✓ Recently re-approved by WRAS.
- ✓ Accessible for infirm and elderly.
- ✓ To comply with the recently published Water UK/ HBF Joint Industry Development committee best practice guidelines.
- ✓ Perfect platform for "smart" meters.
- ✓ Contribute to Code for Sustainable Homes and BREEAM by allowing ease of water consumption monitoring.
- ✓ Easy access for eyeball reading.
- ✓ Meet Secure by Design Criteria Co-located utility meters.
- ✓ Offers multiple location options.
- ✓ Water Regulation approved.
- ✓ To reduce Carbon footprint.
- ✓ Use on new or existing housing stock.
- ✓ Low cost maintenance facility.



Where and when can Groundbreaker be used:

- ✓ Greenfield sites
- ✓ Contaminated (brownfield) sites
- ✓ Urban Regeneration
- ✓ New build housing
- ✓ Park homes & caravan sites
- ✓ Compatible with barrier pipes*
- ✓ Can be installed at any time of life to a new or existing building.

* not included in the Groundbreaker WRAS approval.

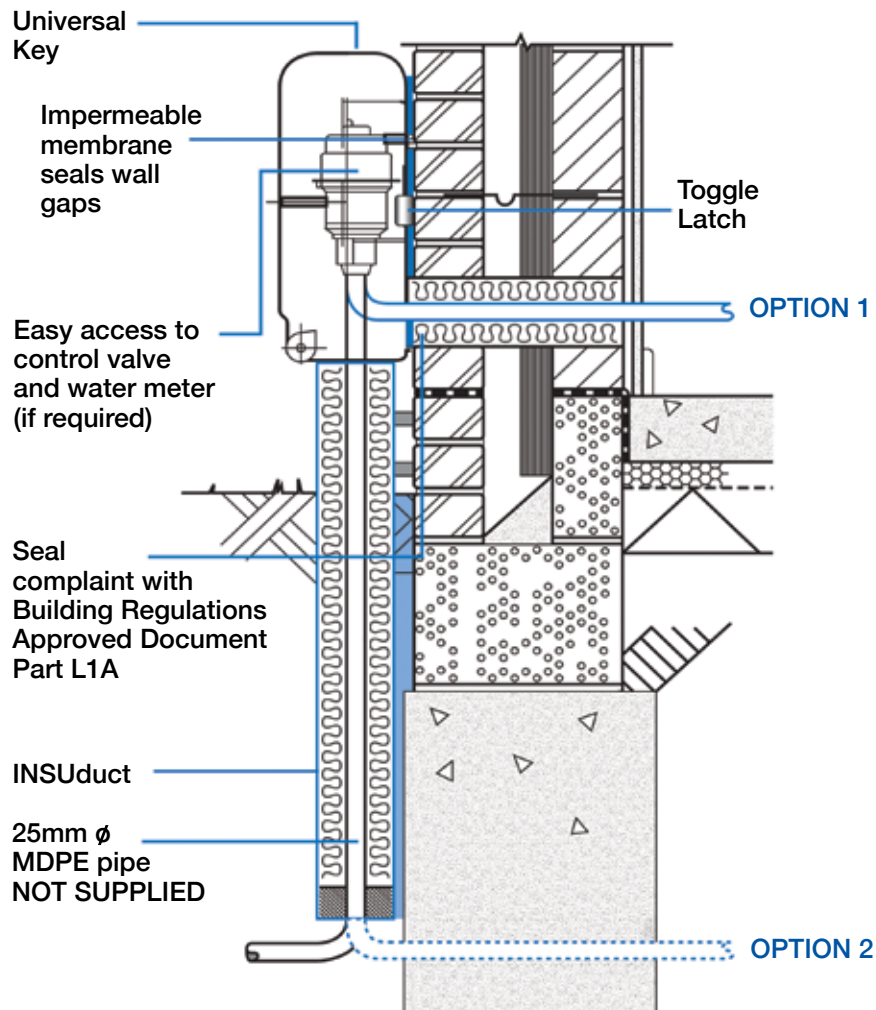


For more information please contact Groundbreaker Systems

Tel: **01379 741993** email: **sales@groundbreaker.co.uk** or visit **www.groundbreaker.co.uk**



Technical Data



Size:	500mm x 330 mm x 170mm
Connections:	2 Universal pipe insert connectors for 25 mm dia Standard PE compatible with barrier pipes. (Not included in WRAS approval)
Control Valve:	Standard washer / spindle
Check valve:	Watts Ocean
Pressure rating:	Tested to 16 bar QA certified to 12 bar.
Water meter compatibility:	All concentric types
Seals:	Impermeable membrane seals wall gaps

Shell:	Injection moulded in 100% reprocessed polypropylene material UV stabilised 50+ year design life
Insulation:	50% recycled material Thermal conductivity 0.025W/mK Water absorption >0.1% by volume. Compliant with/exceeds Water Industry Standard 4-37-01
Tools required:	Drill 7mm masonry bit Screwdriver (Philips type)
Security:	Accessible only at point of delivery for added security. In stainless steel = additional security

