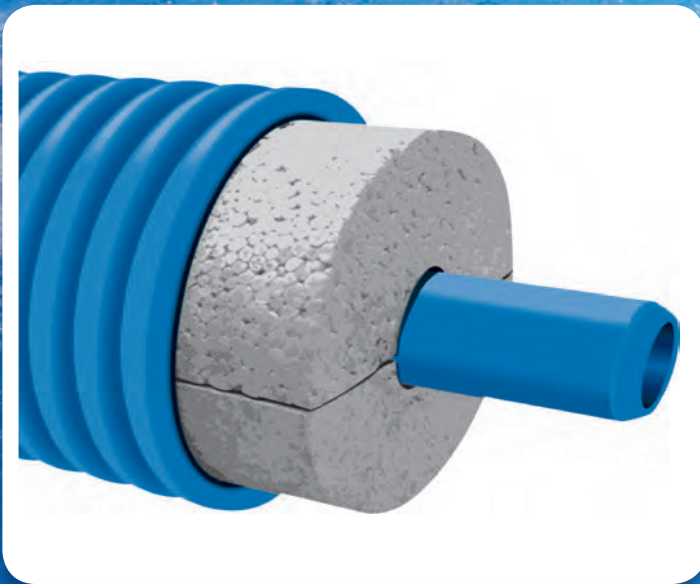


SHalloduct™

The cost effective solution to shallow depth water supply issues. SHalloduct allows water pipes to be laid where it is not possible to reach the recommended depth of 750mm.



Why use SHalloduct?

- To reduce the high cost of spoil disposal in contaminated ground situations
- Suitable for either Green or Brownfield developments
- Available for 25 or 32mm diameter pipes (includes barrier pipe equivalent)
- Meets water regulation guidelines G4.4, G4.12
- Fully compliant with DETR guidelines and water regulations for frost protection

SHalloduct can be used for:

- Over concrete foundations or rocky soils
- Over protected tree roots
- Over ditches and other obstacles
- For temporary water services above ground (site works)

Slides easily into twin wall pipe (supplied by others) or similar outer sleeve - as shown in images above.

